



**YOUR DREAM
HOME AWAITS
IN GAHANGA**

20 minutes from Kigali City center



130,000,000 RWF
PRICE



264 SQM
PLOT SIZE



HOUSE SIZE
200 SQM



DEPOSIT ON CONTRACT
REMAINING ON
COMPLETION

PROPERTY SNAPSHOT

This home offers 4 spacious bedrooms and 2 modern bathrooms, designed to provide both comfort and functionality for the entire family.

Key features include:

- A well-appointed kitchen
- Bright and welcoming living room
- Balconies with pleasant views
- Secure parking space for two cars
- An annexe with an outside kitchen and toilet
- After-sales services up to 6 months

Together, these features create a comfortable and convenient living environment, perfect for family life or a rental business.



PROPERTY DESCRIPTION

This home is at 20 minutes from Kigali city center. Experience modern living in this beautifully designed two-story home, located in the serene neighbourhood of Gahanga. Built with quality materials and thoughtful design, this home offers four spacious bedrooms, a modern kitchen, and a welcoming living room.



Enjoy breathtaking views from private balconies and a secure compound perfect for family life. With easy access to key amenities and just , it's the ideal place to create lasting memories.



EXTERIOR VIEW



The exterior view of this dream residence emphasizes its exceptional accessibility and unique visibility. Positioned with dual road access—one along the left side and another at the bottom—the property ensures both convenience and prominence. From an elevated vantage point, even when viewed from above, the architectural design and exterior features of the home are strikingly clear, showcasing its elegance and thoughtful layout



MODERN KITCHEN & DINING ELEGANCE



A beautifully designed open-plan kitchen and dining area that blends style with functionality. Featuring sleek wood-toned cabinetry, modern appliances, and natural light, it creates a bright and refined atmosphere. The dining space, set beneath a floating staircase with a marble-top table and chic chairs, is perfect for family meals or entertaining. Green accents and minimalist finishes complete this timeless.

This kitchen and dining area is more than just a place to cook—it's a welcoming heart of the home, designed for comfort, style, and everyday living.



BEDROOM RETREAT

A stylish and cozy bedroom designed for comfort and functionality. Featuring a built-in wardrobe with ample storage, a sleek work desk, and modern finishes, this space balances practicality with elegance. Natural light flows through large windows with layered curtains, creating a warm and inviting atmosphere—perfect for rest and relaxation.



MODERN BATHROOM

A contemporary bathroom with a spa-like feel, highlighted by marble wall finishes and a glass-enclosed shower. The sleek vanity, elegant fixtures, and natural textures bring together style and function. This serene space is crafted for both everyday convenience and luxurious comfort.



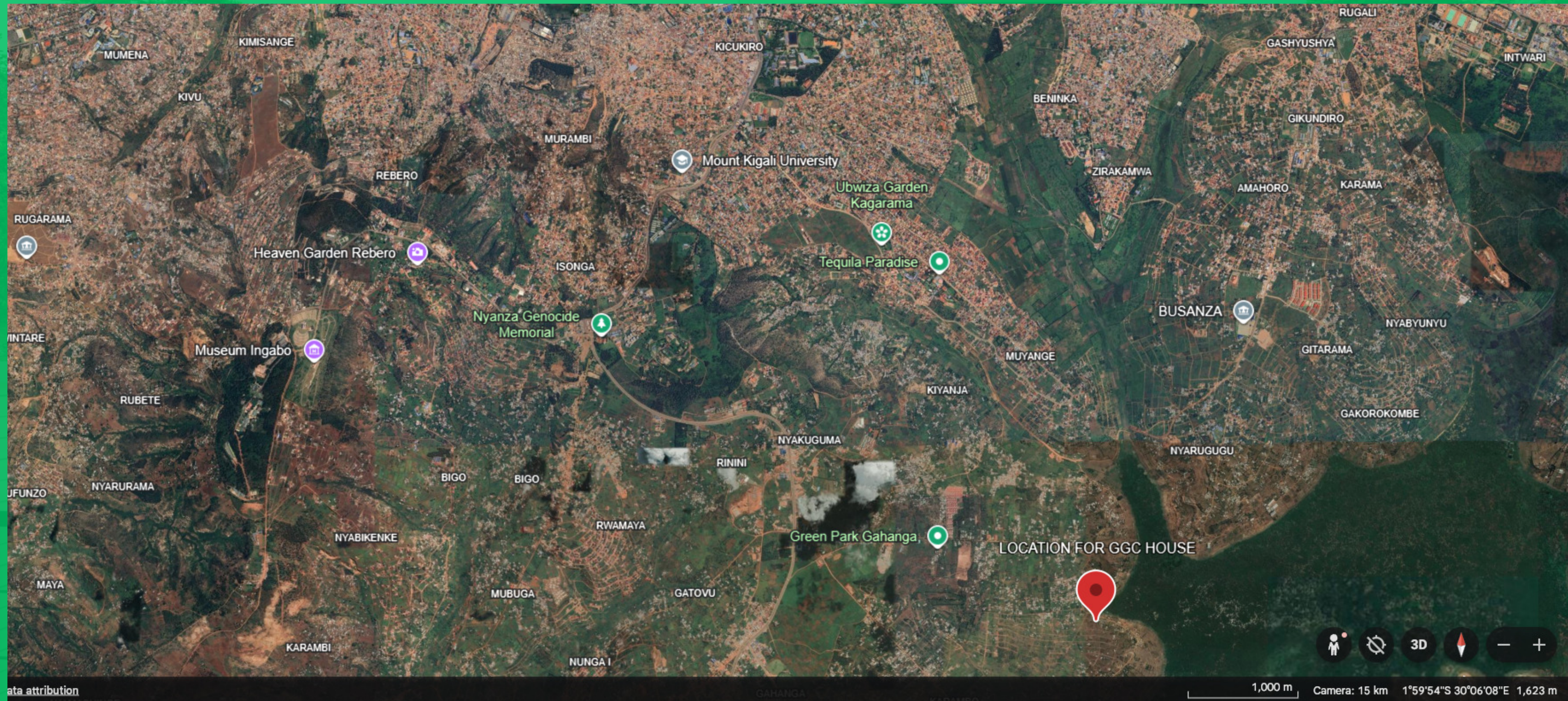
FLOOR PLAN

Ground Floor



First Floor

GOOGLE MAP LOCATION



PROJECT PROGRESS

As of the time this brochure
was created



ABOUT DEVELOPER



We are dedicated to providing high-quality homes at reasonable prices, with a strong focus on creating healthy living environments for our occupants in the long run. With over 10 years of experience, our mission is to build lasting homes that not only stand the test of time but also create meaningful memories for our clients.

As the name suggests, we believe your home should reflect the beauty of nature—bringing health, comfort, and prosperity while creating a warm space to welcome and entertain your guests. With Widen Nature Limited, you can trust that the right financing is in place to complete your dream home quickly, with elegant finishing that matches your lifestyle.



BOOK A PRIVATE VIEWING TODAY

And take the first step toward owning your dream home

- **Contact Details:**

- Phone /WhatsApp: +250 787173772/ +250781784165
- Contact: GREEN GRAPHENE CONTRACTOR LTD
- Email: green.graphene.c@gmail.com
- Website: www.greengco.com